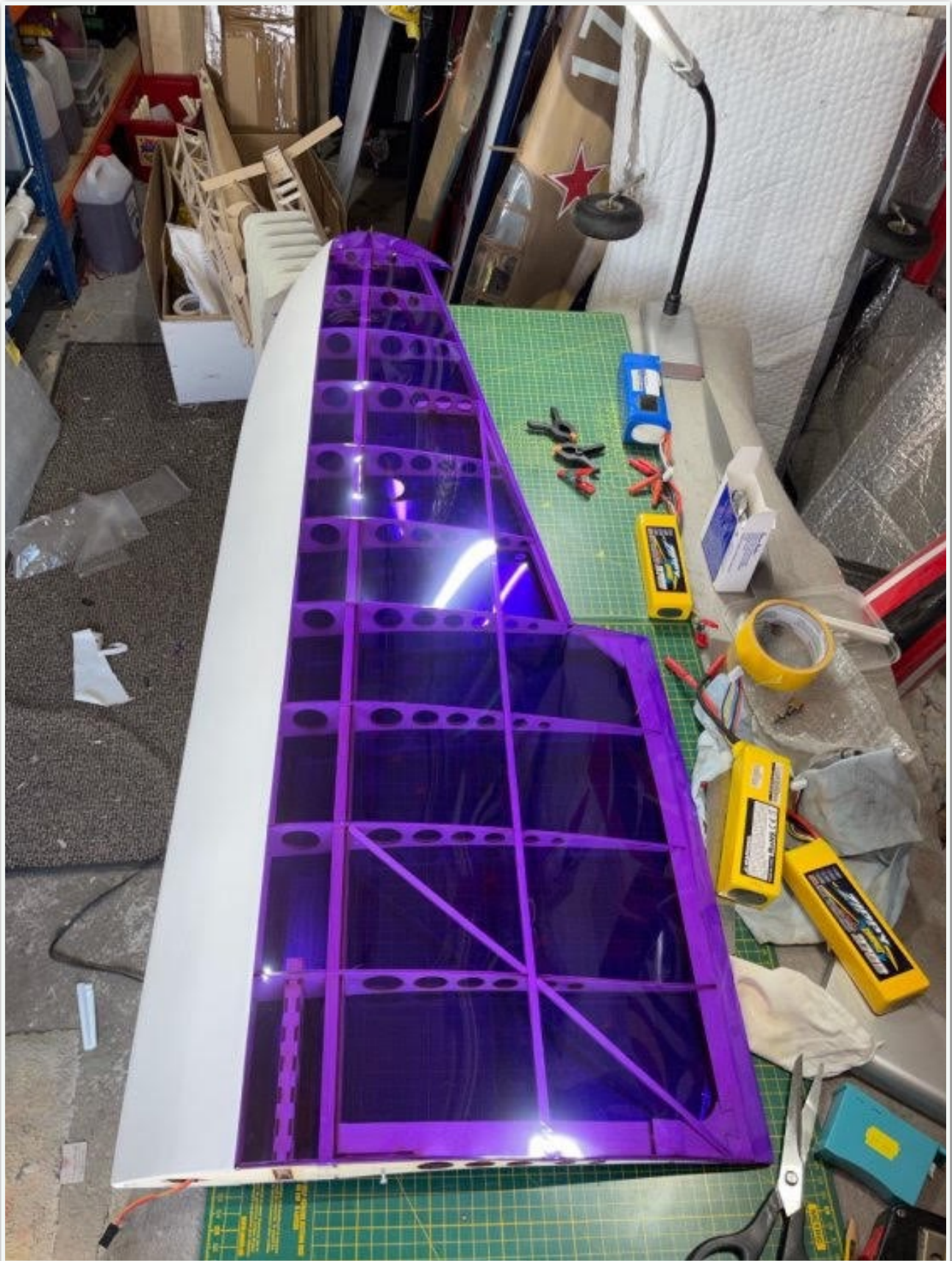


Ron Gray - Leprechaun XL

Build blog 10, Final

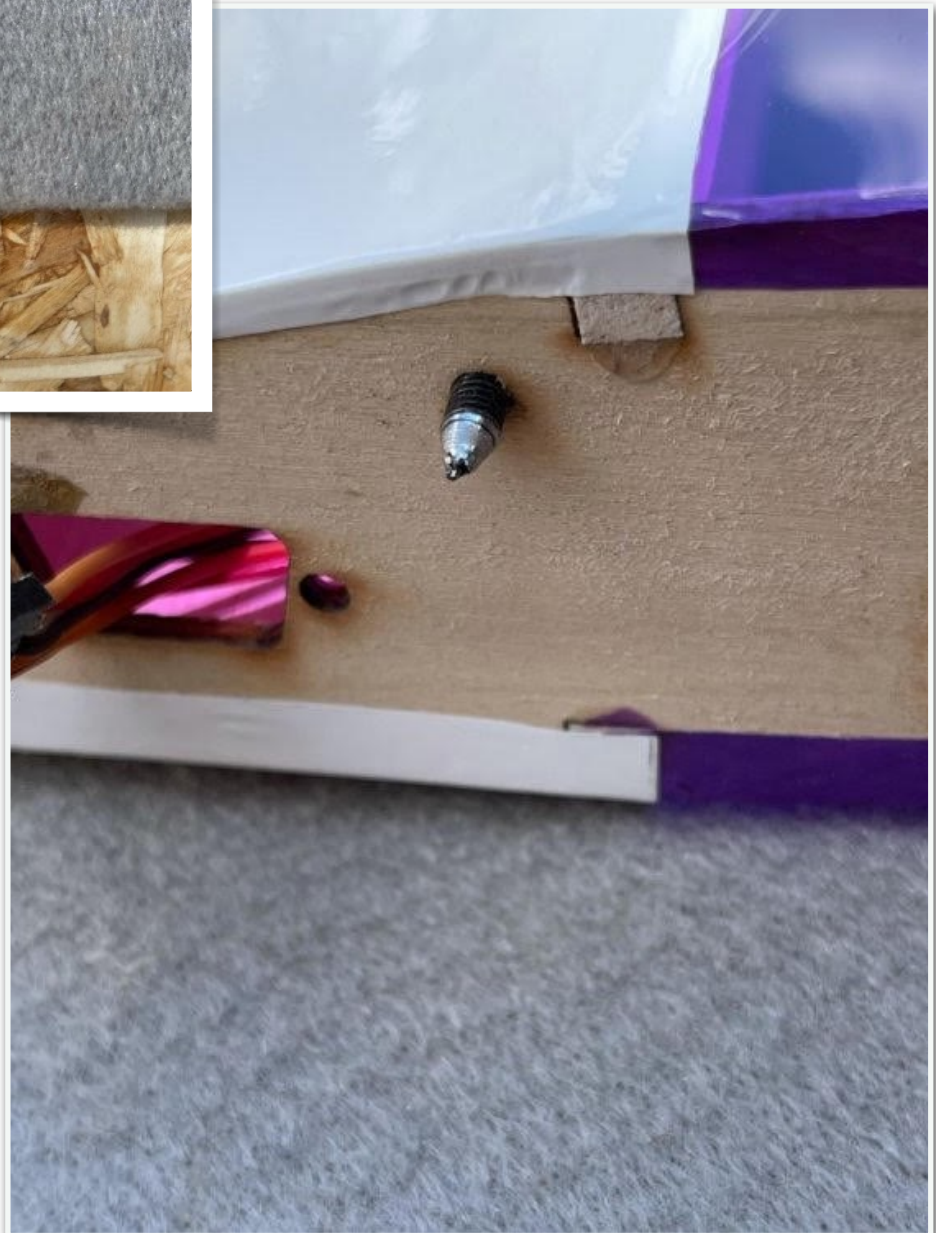
The 2 outer wing panels were next to be covered, a friend commented that covering those wings must be a bit like making a bed, he wasn't far off the mark. Glad that they're out of the way as they took a lot of time to do. Looking at the covering off-cuts I realised that I should have started with the outer wing panels and work down to the smaller pieces. This would have resulted in a lot less wastage.



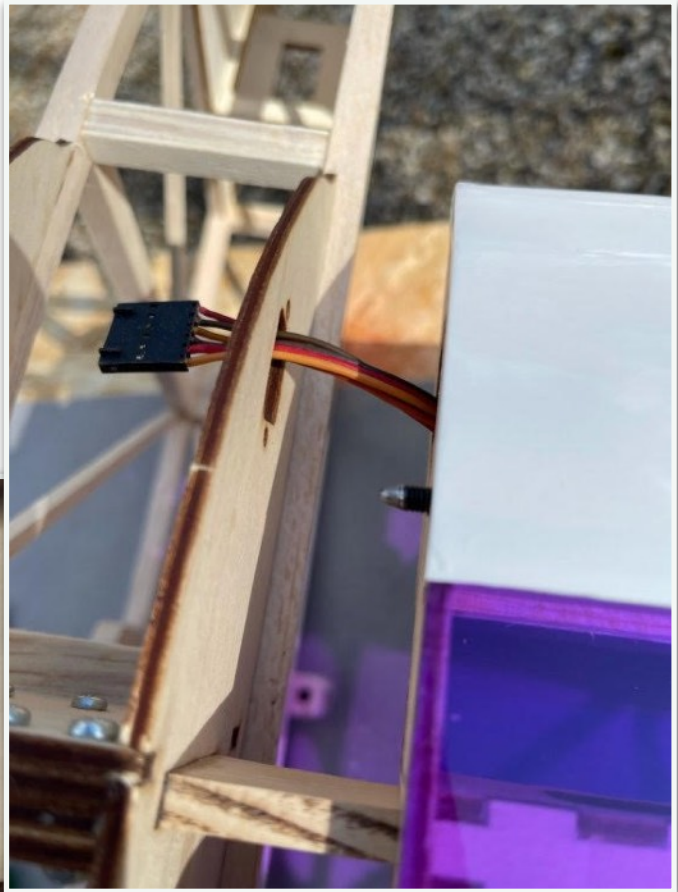
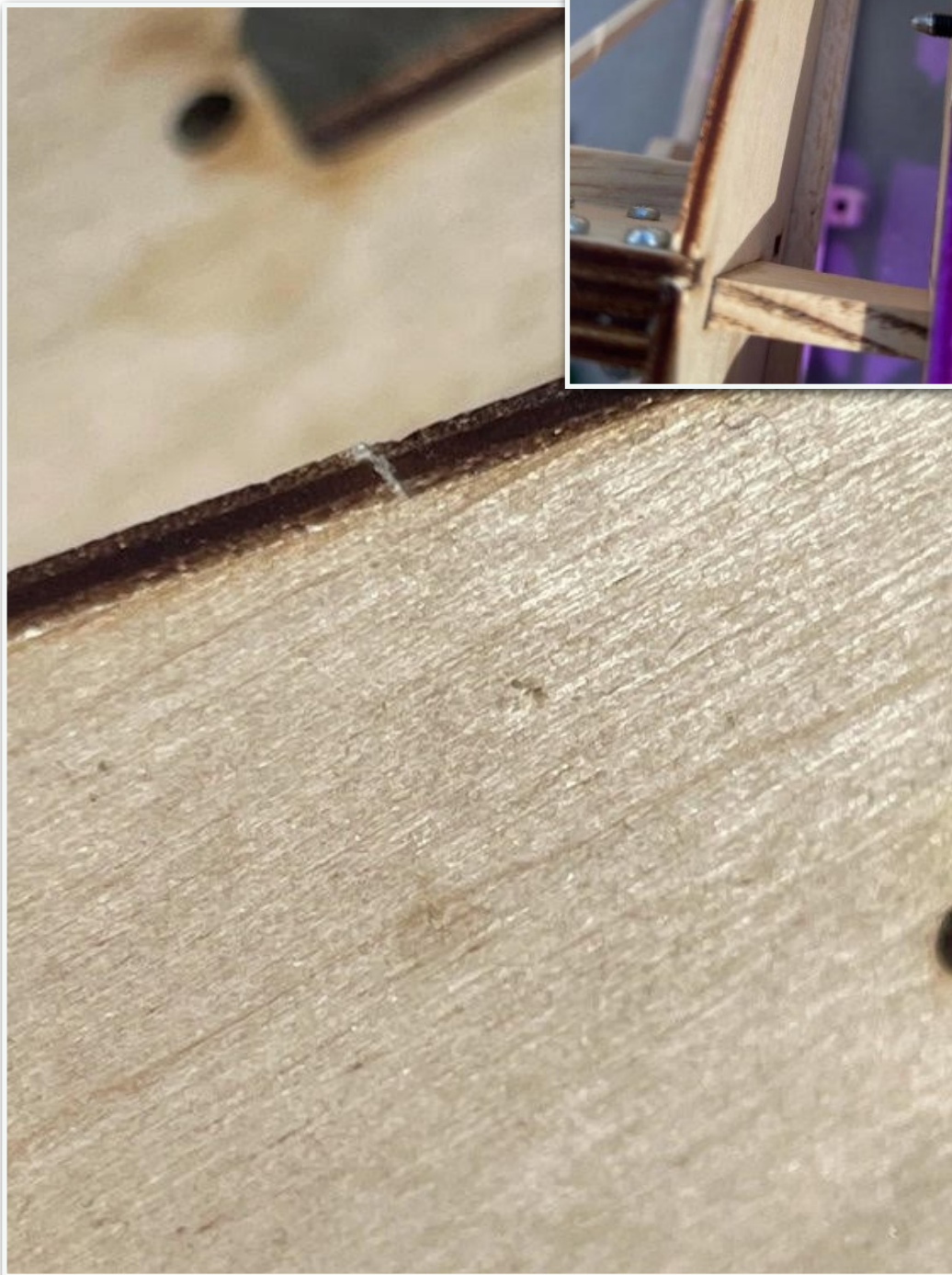


Time to sort out the wing to fuse fixings. The design is for 2 hooked screws fixed to the root ribs and then once the inner wing panels have been slid onto the joining plates a rubber band is used to hold the wings together. I didn't want to do that, I wanted to have nylon fixing bolts instead.

The rear fixings were easy as there already were anti-rotation pin holes in both the root ribs and the mating ribs on the fuse. So in order to correctly line up the forward fixings I used the lathe to turn a point onto a 4mm bolt which was then screwed into the threaded hole I had formed in the root rib.



Then I pushed the inner wing panel into the fuse so the the pin formed a slight indent showing where to drill the hole for the fixing bolt.



Then it was a simple matter of bolting the inner wing panels onto the fuse.





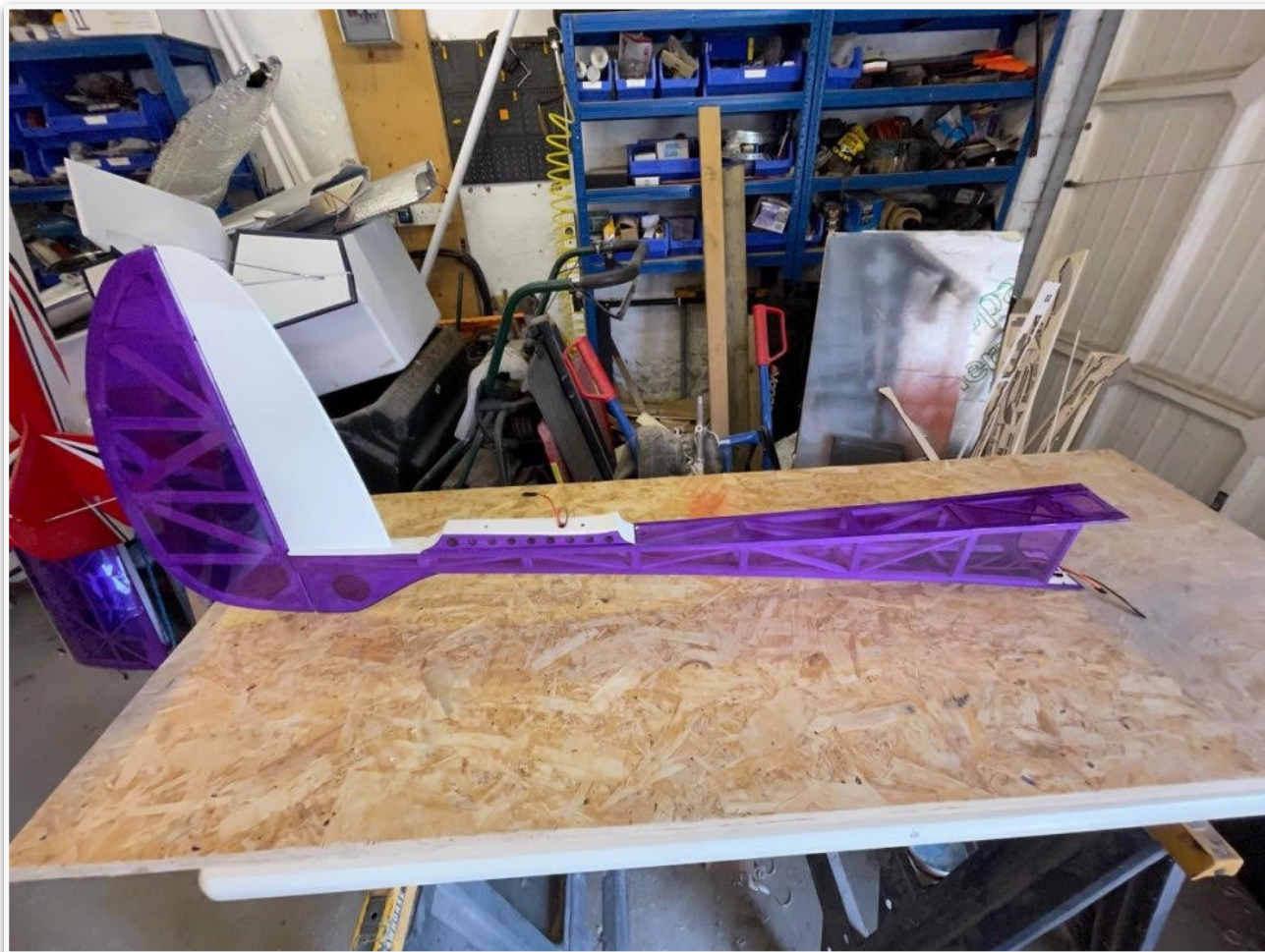
I wanted to check the C of G so put the wings together and fitted them to the fuse. With a 3700Mah 4s up front it balanced ok.



I had a big problem covering the rudder, the transparent HK film really does shrink, a lot more than the solid colour stuff, and it twisted the rudder like a crisp. Second attempt, at a lower temperature, wasn't much better so I added some diagonal braces to the structure then applied the film at an even lower temperature and this time it was OK.



The fuselage wasn't such an issue.



So, finally, the covering is complete:





And the obligatory posed photos:





The initial trip up to the field for its maiden flight ended in no flight due to the esc which decided to pack-up. So back home and a new one installed. Then I had to wait for a break in the windy conditions before I could take it back, which was a few days but I can report back that the maiden flight was successful and the link to the video is shown below.

<https://youtu.be/dSPgBm1VO34> (after viewing, use your browser back button to return to the BMFC site)

Now then, what is next on the build calendar? I think that it is high time that I finished off the BF110 that I started last year as there really is only the fuse to cover then it is over to the spray paint!