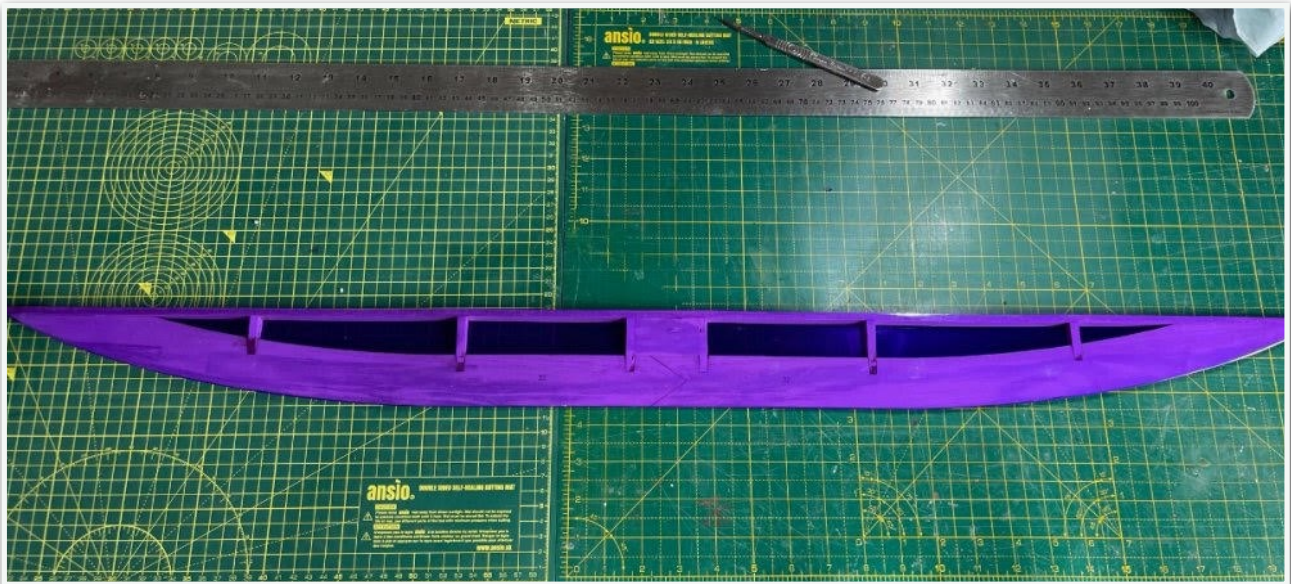


# Ron Gray - Leprechaun XL

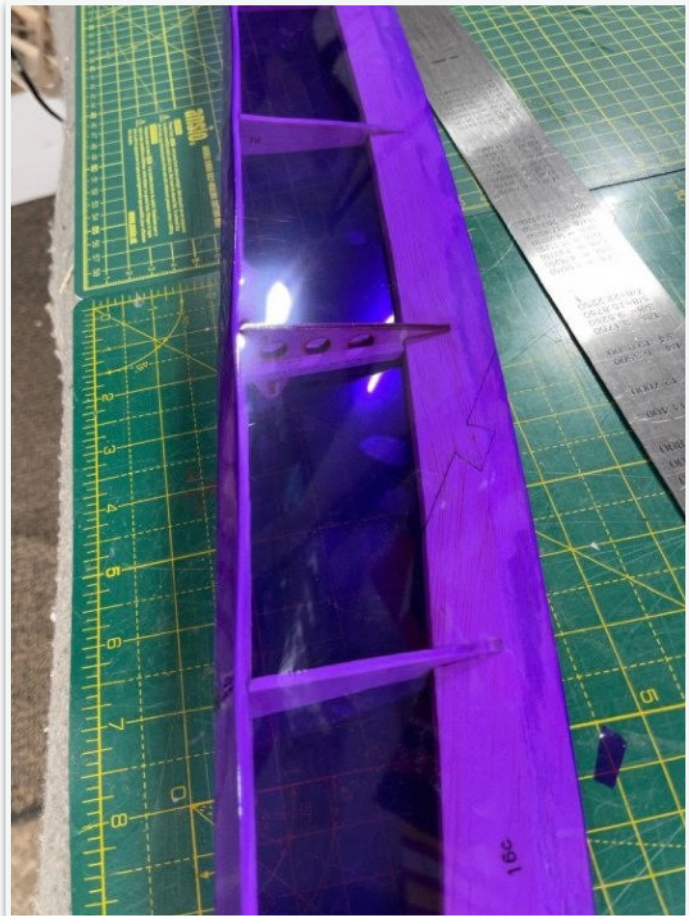
## Build blog 9

Lots of sanding over a few days so that I could start the big cover up.

I started with the elevator as it was the smallest part, which was a bit of a mistake (see later for the reason why).

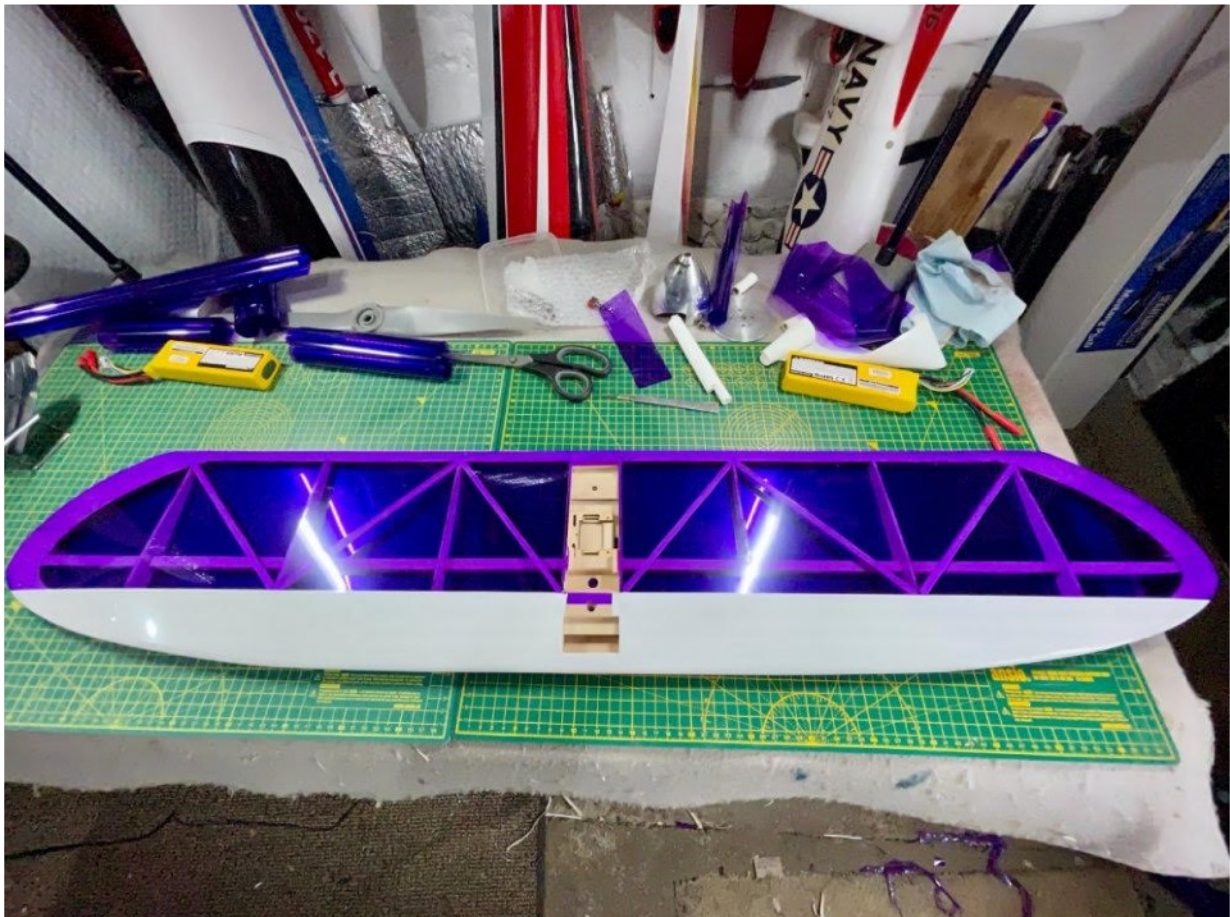
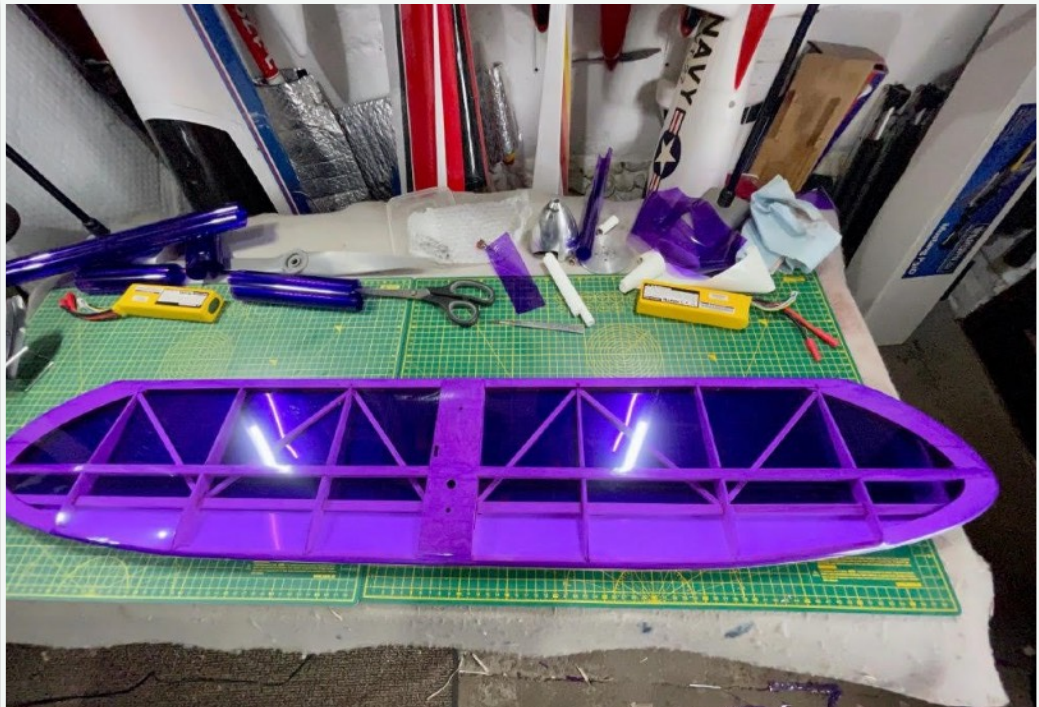


Next I moved on to the ailerons but this is where I encountered an issue. After shrinking the film, the LE had developed a 'starving horse' appearance.





So I stripped the covering off and redid it paying particular attention applying the least amount of heat, a bit better but still has introduced some curves. At this stage I was unsure about what to do, leave it as it is or strip off the covering again and replace / strengthen the LE. I thought of various options including carbon rods, additional ribs, new solid balsa LE and in the end left the ailerons to give myself more thinking time and got on with the tailplane.



Coming back to the aileron problem I decided to glue some 3/32" strip to the LE, notched into the ribs





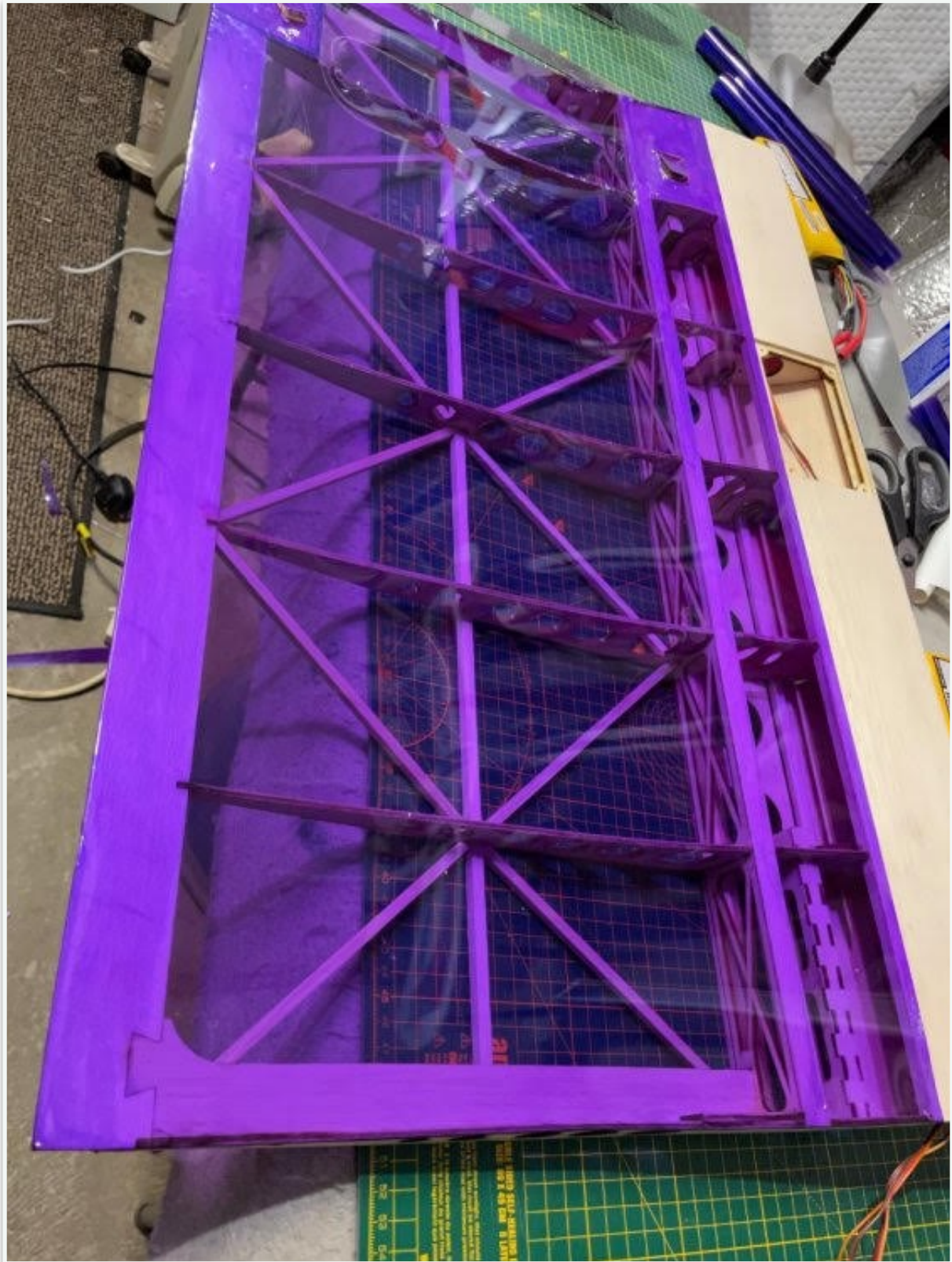
Which resulted in a straight LE, the horse has been fed! (The patchy look on the TE is where I've still got to go over it with the iron and cloth).





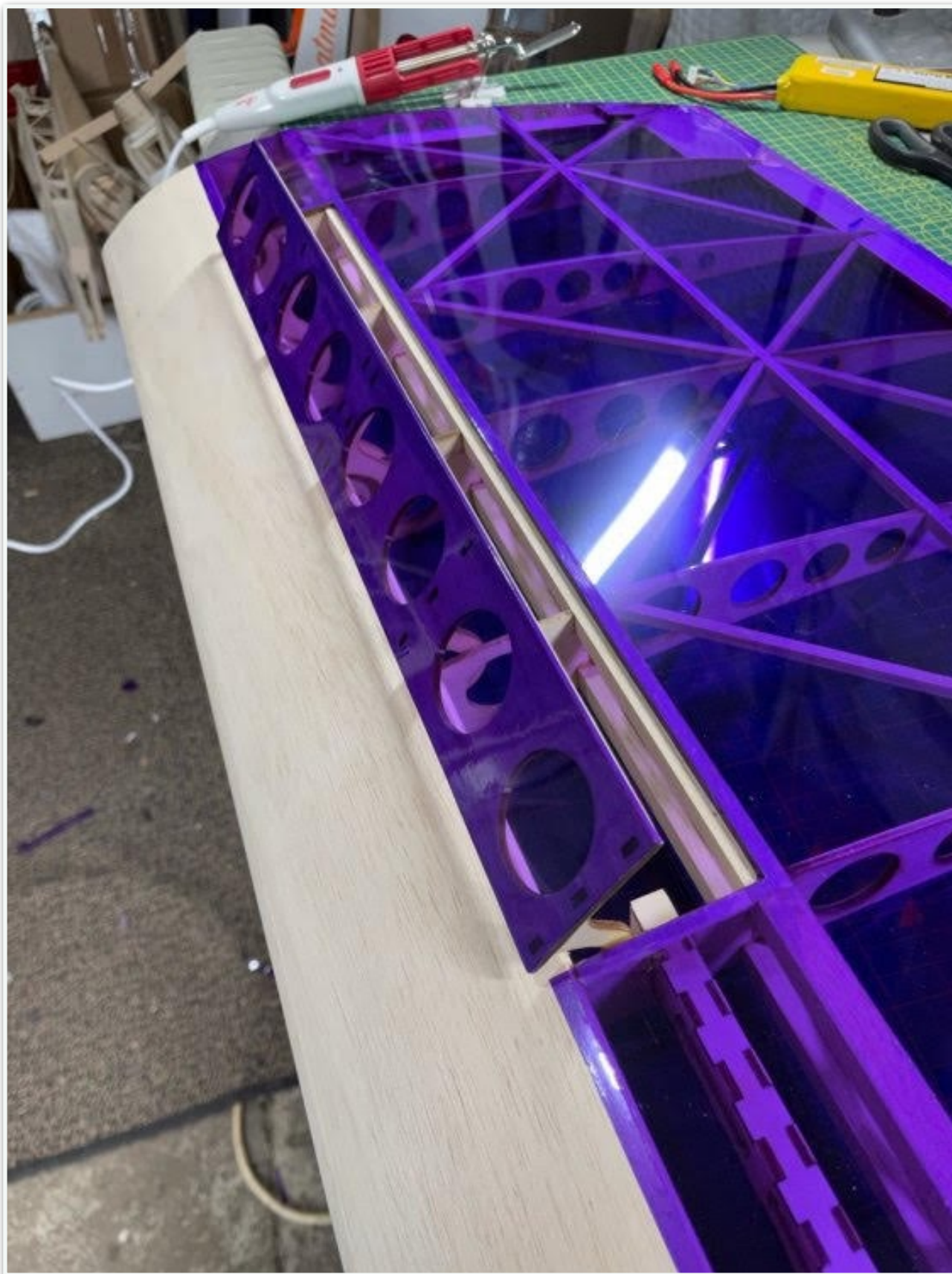
With that little problem resolved it was then onto the inner wing panels.

First wing panel, under cambered, done. I used 'Cover Grip' to give me some heat reactive bond to make sure the film stuck to the ribs and gradually worked my way back from the LE sheeting to the TE, one rib at a time.





Then onto the top surface. A bit that was of some concern for covering were the air brakes, mainly because I've really had to do them in situ and the pivot edge sealing was difficult to get at.

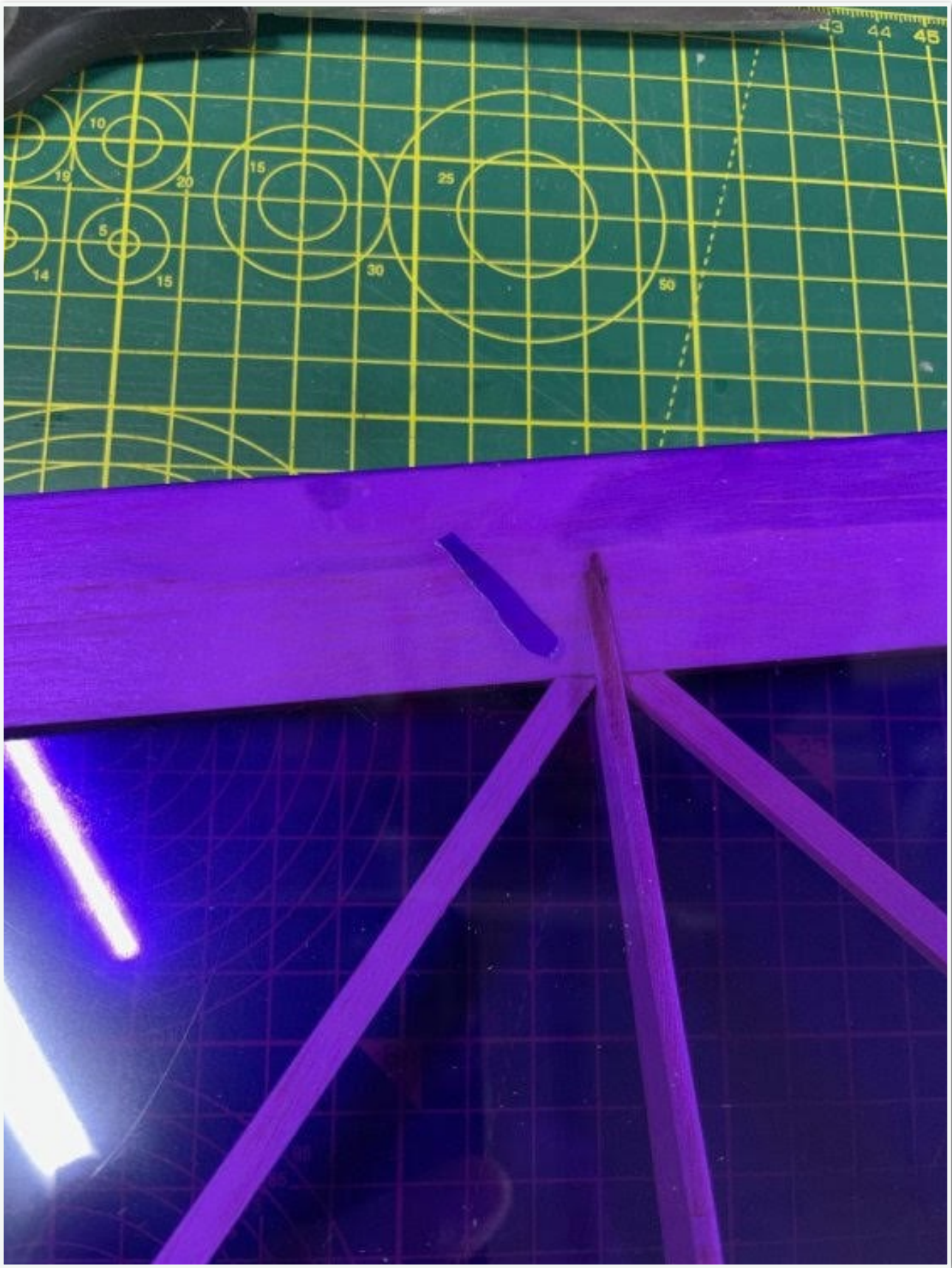


As you can see, there is a very small gap. Too small for the covering iron to get to, but this is where my 'special' iron came in to play





No matter how careful you are something slips through the net courtesy of static and typically I didn't see it until after I had applied the top covering!





One inner wing section finished!

